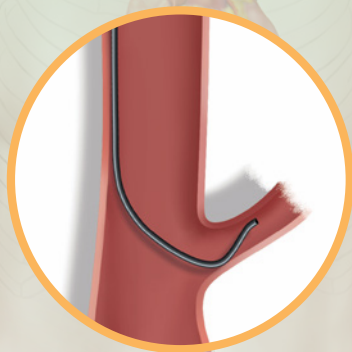


Glidecath[®]

Hydrophilic Coated Catheter

ENGAGE AND DELIVER

Expand your access and delivery options
for therapeutic delivery



- **Superior Trackability^{1,a}**

Traverse tortuous anatomy while leveraging a superior ability to deliver devices through a nylon rich inner layer

- **Superior Torqueability^{1,a}**

Engage acute vessels with superior torque control with a double-braided design

- **Excellent Lubricity^{1,a}**

Navigate difficult vasculature with the excellent lubricity provided by Terumo Glide Technology

PUSHING BOUNDARIES

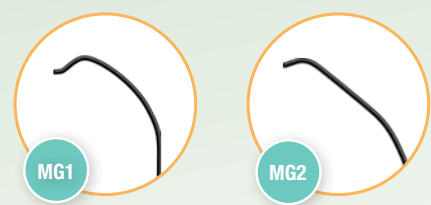
Terumo Interventional Systems is **committed to your success** with innovative procedural solutions and ongoing support for your most challenging cases.

We are relentlessly seeking new ways to help you achieve **better outcomes for more patients**.



GLIDECATH® Hydrophilic Coated Catheter MG1 and MG2

| PRODUCT CODE | FRENCH SIZE | LENGTH (CM) | TIP SHAPE | HYDROPHILIC COATING (CM) |
|--------------|-------------|-------------|-----------|--------------------------|
| CG440 | 4Fr | 125 cm | MG1 | Distal 15 cm |
| CG441 | 4Fr | 135 cm | MG2 | Distal 40 cm |
| CG442 | 4Fr | 150 cm | MG2 | Distal 40 cm |
| RF*ZRV511CM | 5Fr XP | 125 cm | MG1 | Distal 15 cm |
| RF*ZUF511DJM | 5Fr XP | 135 cm | MG2 | Distal 40 cm |
| RF*ZUF5115JM | 5Fr XP | 150 cm | MG2 | Distal 40 cm |



GLIDECATH® tip shapes specifically designed for radial access provides you with the performance required for visceral and pelvic interventions.

GLIDECATH® Hydrophilic Coated Catheter MG1 and MG2 Specifications

| | 4Fr | 5Fr XP |
|---------------------------------|--------------------------------|--------------------------------|
| Effective Lengths | 125 cm, 135 cm, 150 cm | 125 cm, 135 cm, 150 cm |
| Construction | Double-Braided Stainless Steel | Double-Braided Stainless Steel |
| Inner Diameter - Distal Tip | 0.0405" / 1.03 mm | 0.0472" / 1.20mm |
| Inner Diameter - Proximal Shaft | 0.0413" / 1.05 mm | 0.0480" / 1.22 mm |
| Guidewire Compatibility | 0.038" | 0.038" |
| Maximum Injection Pressure | 750 psi | 1000 psi |
| Hydrophilic Coating | Distal 15 cm and 40 cm | Distal 15 cm and 40 cm |

FIND OUT MORE



US: 800.888.3786
CA: 833.883.7866



US: [terumo.com](https://www.terumo.com)
CA: [terumocanada.ca](https://www.terumocanada.ca)

References:

1. Data on file.

^a When compared to leading competitors

RX ONLY. The advertisement is directed to physicians only, and not to consumers. Refer to product labels and packaging insert for complete warnings, precautions, potential complications, and instructions for use. Products may not have regulatory approval in all countries. Please contact your local sales representative if you have questions about the availability of products in your area.

©2024 Terumo Medical Corporation. All rights reserved. All brand names are trademarks or registered trademarks of Terumo. PM-08603

