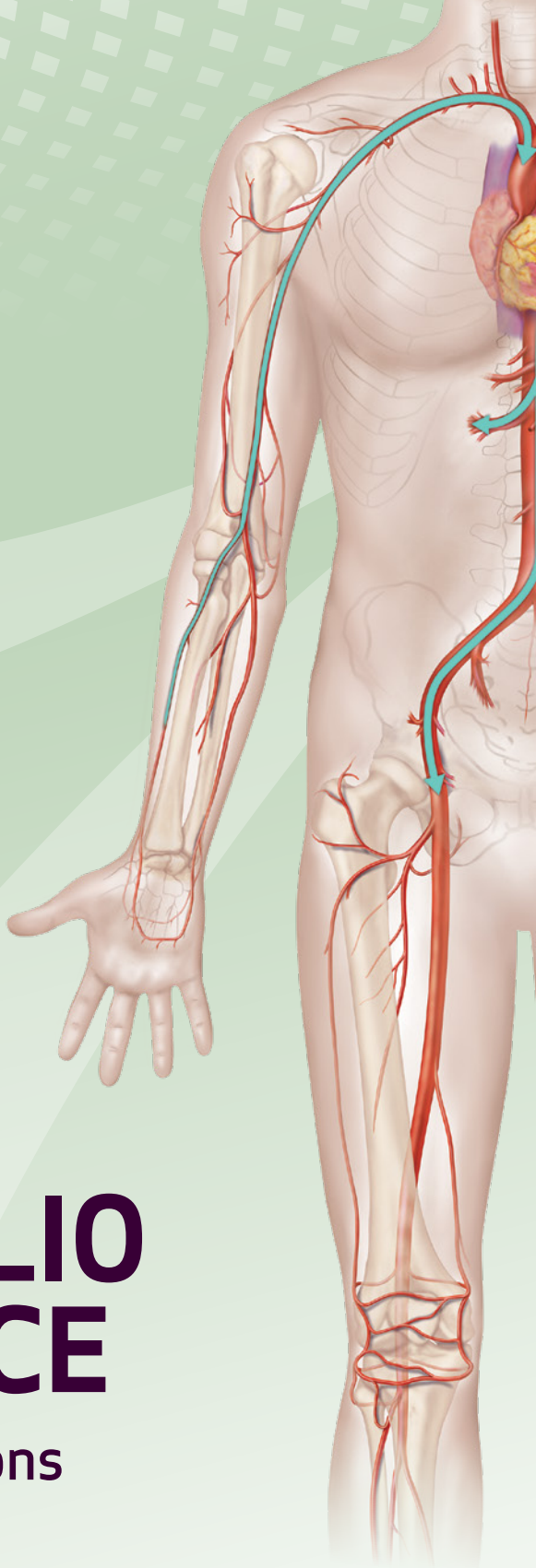


R2P[®]

Radial to Peripheral —

YOUR
**PORTFOLIO
OF CHOICE**

For Radial Solutions



 **TERUMO**
INTERVENTIONAL
SYSTEMS



ACCESS

GLIDESHEATH SLENDER[®] Hydrophilic Coated Introducer Sheath

R2P DESTINATION SLENDER[™] Guiding Sheath

R2P SLENGUIDE[™] Guiding Catheter

TARGET

GLIDEWIRE[®] Hydrophilic Coated Guidewire

GLIDECATH[®] Hydrophilic Coated Catheter

R2P[®] NAVICROSS[®] Support Catheters

INTERVENE

R2P METACROSS[®] RX PTA Balloon Dilatation Catheter

R2P CROSSTELLA[®] RX PTA Balloon Dilatation Catheter

R2P MISAGO[®] RX Self-expanding Peripheral Stent

CLOSE

TR BAND[®] Radial Compression Device

MAXIMIZE RADIAL SOLUTIONS TO PERIPHERAL CHALLENGES

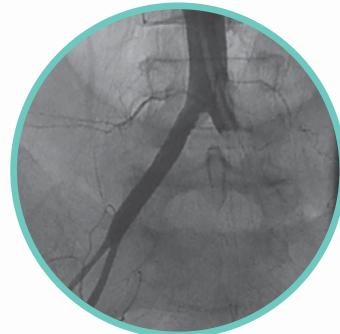
Clinical situations may compromise a femoral approach to treat peripheral artery disease

Consider the clinical advantages of choosing **radial to peripheral** intervention¹⁻³

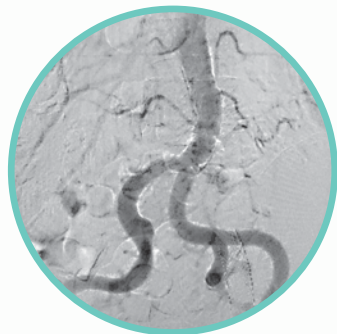
Radial access may help to elevate your value-based healthcare



Previous femoral-femoral bypass



Totally occluded left iliac, limited access to right femoral



Significant iliac tortuosity and calcification

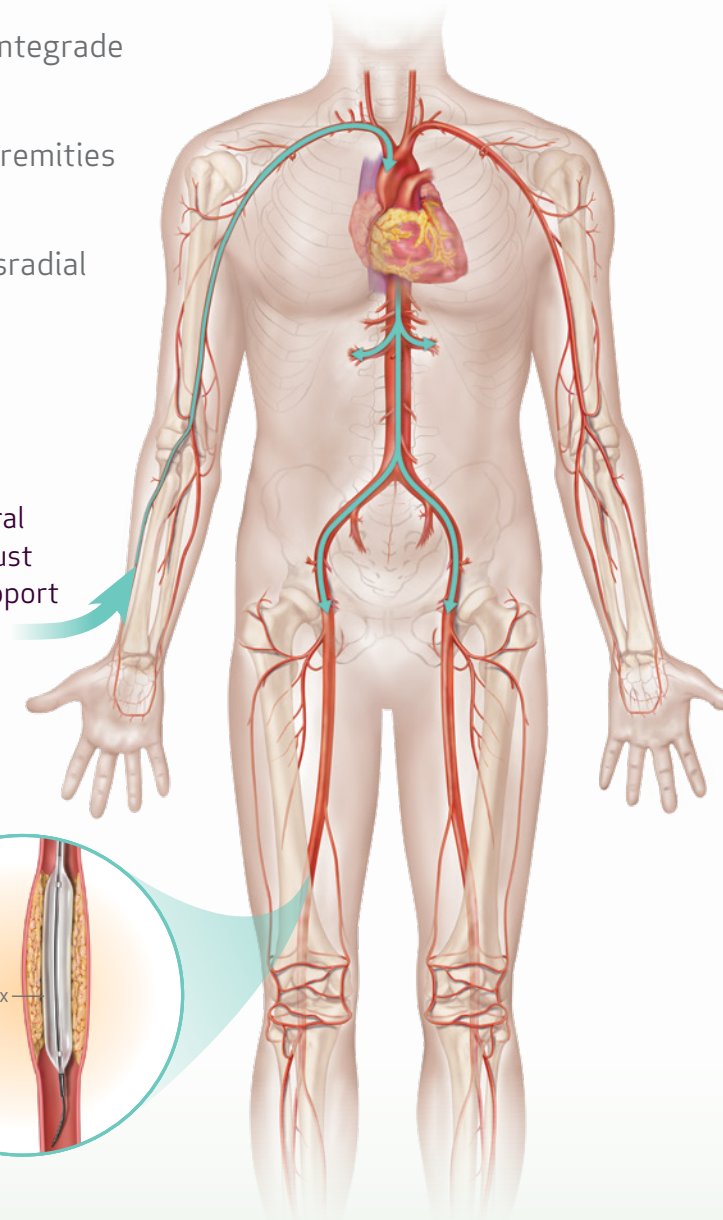
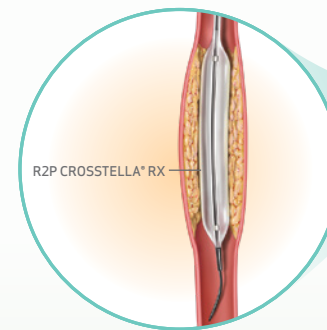


Previous abdominal aortic (AAA) graft

- Lower risk access site for antegrade interventions
- Can address both lower extremities from a single access point*
- Proven preference for transradial access versus alternative non-femoral access sites

Achieve procedural success with robust case planning support

PTA Balloon across lesion in distal SFA from Radial approach



Patient Preference⁴⁻⁷

- Greater procedural satisfaction
- Improved patient comfort
- Opportunity for same-day discharge

Procedure Advantages⁴⁻⁷

- Easy to manage access site
- Reduction in major bleeding complications
- Expand your clinical capabilities

Economic Impact^{8,9}

- Potential cost reduction up to \$3,500 per patient
- Perform more procedures with increased patient throughput
- Expedite cath lab and recovery unit turnover

TERUMO. **YOUR RADIAL EDGE.**

R2P[®]
Radial to Peripheral

A **different approach** can support your **patient challenges**

* Proper patient selection will support successful clinical outcomes when using R2P™ portfolio of products.

TERUMO
INTERVENTIONAL
SYSTEMS

PUSHING BOUNDARIES

Terumo Interventional Systems is **committed to your success** with innovative procedural solutions and ongoing support for your most challenging cases.

We are relentlessly seeking new ways to help you achieve **better outcomes for more patients.**

When you are ready to request more information,
contact your TERUMO sales representative.

FIND OUT MORE



800.888.3786



terumo.com

Indications

The R2PTM MISAGO® RX Self-expanding Peripheral Stent is indicated to improve luminal diameter in symptomatic patients with de novo or restenotic native lesions or occlusions of the Superficial Femoral Artery (SFA) and/or proximal popliteal artery with reference vessel diameters ranging from 4 mm to 7 mm and lesion length up to 150 mm.

Important Safety Information

Do not use this device in patients who exhibit angiographic evidence of severe thrombus in the target vessel or lesion site before/after undergoing Percutaneous Transluminal Angioplasty (PTA) procedure, patients with contraindication to antiplatelet and/or anticoagulation therapy, patients who are judged to have a lesion that prevents proper placement or deployment of the stent, a lesion that is within an aneurysm or an aneurysm with a proximal or distal segment to the lesion, or a lesion through which a guide wire cannot pass. This device should only be used by a physician who is familiar with, and well trained in, Percutaneous Transluminal Angioplasty (PTA) techniques, stent implantation, and transradial access.

RX ONLY. Refer to the product labels and package insert for complete warnings, precautions, potential complications, and instructions for use.

References

1. Chase AJ, et al. Association Of Arterial Access Site At Angioplasty With Transfusion And Mortality: The M.O.R.T.A.L Study (Mortality Benefit Of Reduced Transfusion After PCI Via The Arm Or Leg). *Heart*. 2008;94:1019-1025.
2. Mehta SR, et al. Effects Of Radial Versus Femoral Artery Access In Patients With Acute Coronary Syndromes With Or Without ST-Segment Elevation. *JACC*. 2012;60:2490-2499.
3. Romagnoli E, et al. Radial Versus Femoral Randomized Investigation In ST-Segment Elevation Acute Coronary Syndrome The RIFLE-STEACS (Radial Versus Femoral Randomized Investigation in ST-Elevation Acute Coronary Syndrome) Study. *JACC*. 2012;60:2481-2499.
4. Valgimigli M, et al. MATRIX Trial. Radial versus femoral access in patients with acute coronary syndromes undergoing invasive management: a randomized multicenter trial. *Lancet*. 2015;385:2465-76.
5. Schussler JM. Effectiveness and safety of transradial artery access for cardiac catheterization. *Proc (Bayl Univ Med Cent)*. 2011;24(3):205-209.
6. Marso S, et al. Association between use of bleeding avoidance strategies and risk of periprocedural bleeding among patients undergoing percutaneous coronary intervention. *JAMA*. 2010;303(210):2156-64.
7. Duffin DC, Muhlestein JB, Allison SB, et al. Femoral arterial puncture management after percutaneous coronary procedures: a comparison of clinical outcomes and patient satisfaction between manual compression and two different vascular closure devices. *J Invasive Cardiol*. 2001;13(5):354-362.
8. Amin A, et al. Costs associated with access site and same-day discharge among Medicare beneficiaries undergoing percutaneous coronary intervention. *JACC Cardiovasc Interv*. 2017;10(4):342-51.
9. Patel T, Shah S, Pancholy, S. Utility of Transradial Approach for Peripheral Vascular Interventions. *Cath Lab Digest*. 2015 Vol 23, Issue 8.