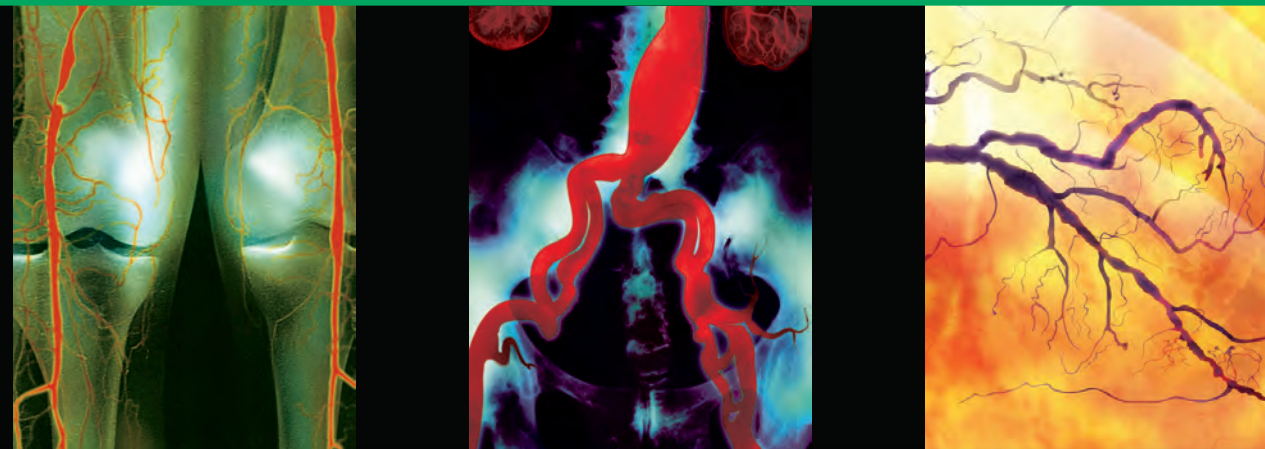


Precision you can feel.

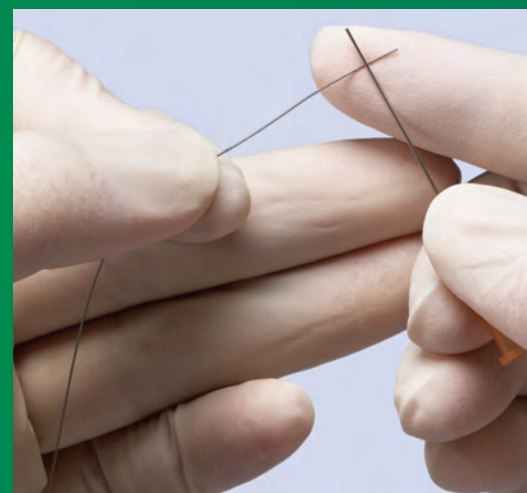
This is TERUMO Territory.™

Runthrough® NS

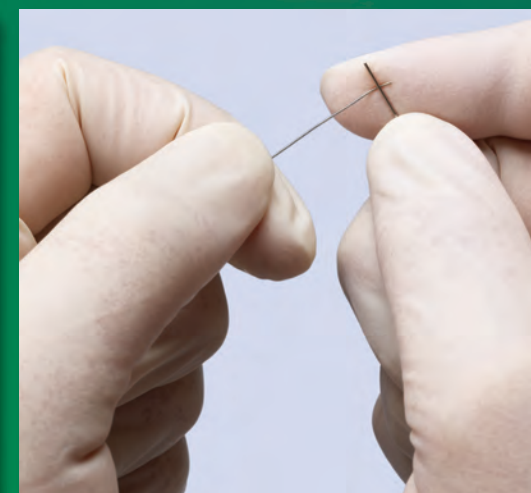
Coronary Guidewire



How to create a moderate angle*



Place guidewire between finger and re-shaper



While maintaining pressure, gently pull the guidewire along the re-shaper

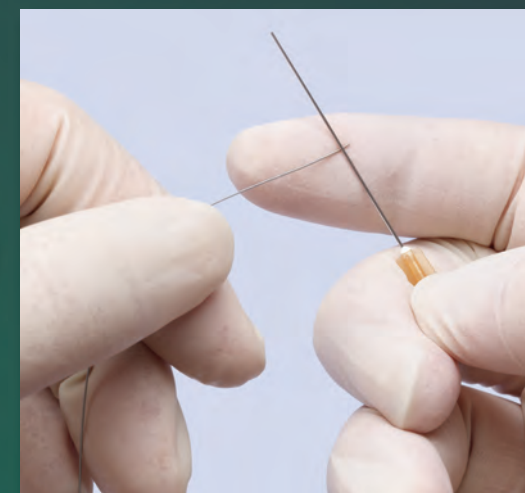


Moderate angle shape is achieved

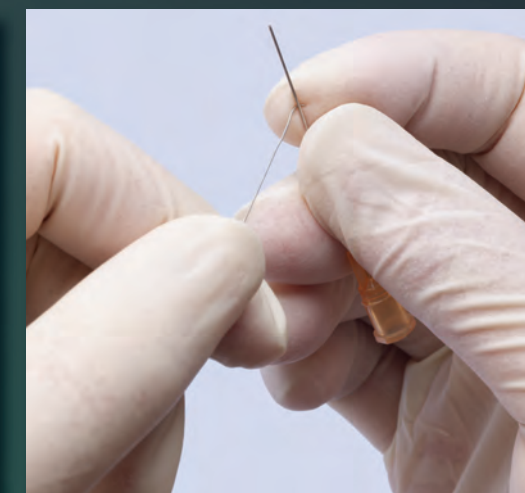


To achieve maximum performance, use the Terumo re-shaper, which is included in the Runthrough NS packaging

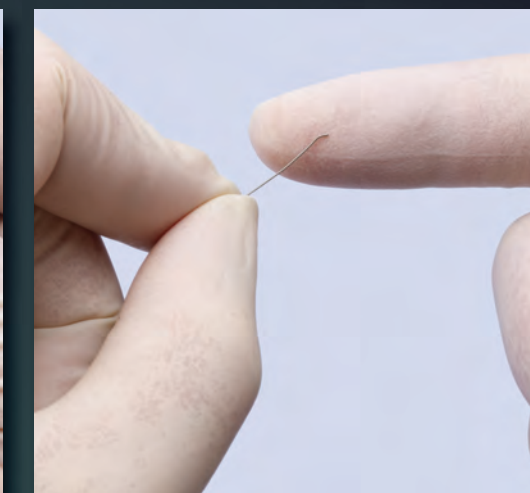
How to create a small acute angle*



Place guidewire between finger and re-shaper at the point of desired length of the angle



Press re-shaper onto the guidewire



Small acute angle shape is achieved

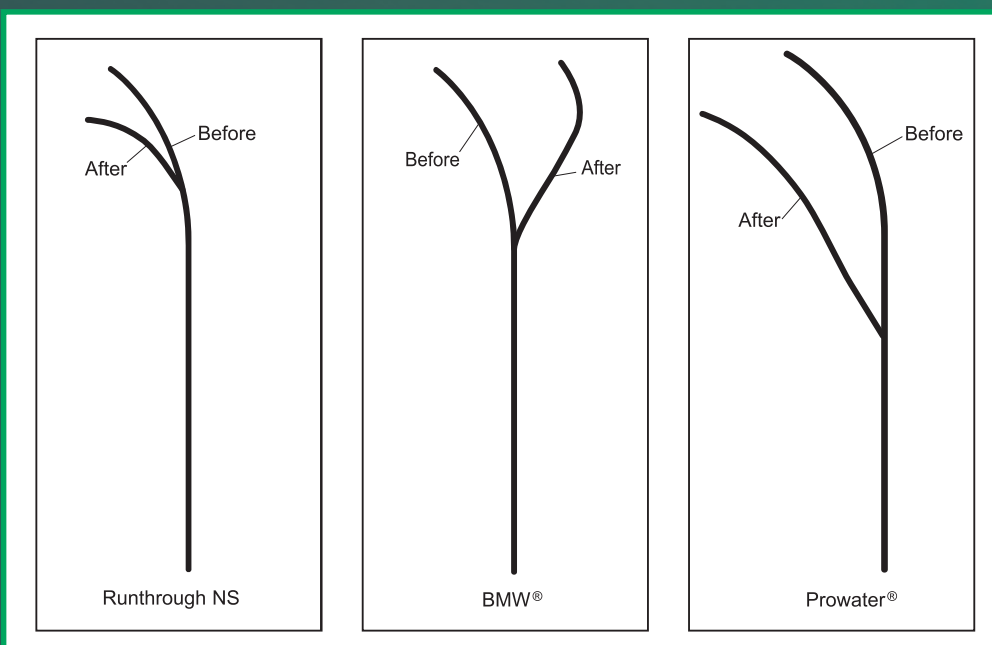
*Guidewire should be wet prior to shaping. Nitinol shaping ribbon allows the physician the ability to re-shape the guidewire.

Notes:

Use Dry Erase Marker Only

Tip Durability

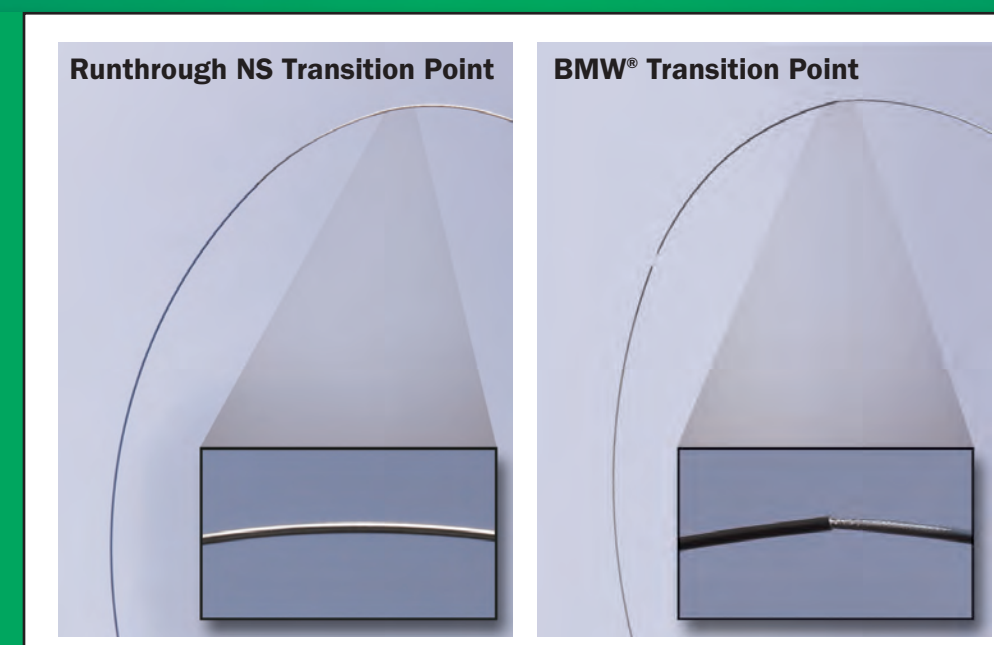
Tested to simulate guidewire experiencing resistance in a coronary vessel. Runthrough NS durable nitinol tip maintains its shape better than leading coronary guidewires.



Data on file. Terumo Corporation, Tokyo, Japan. Illustrations above are recreated from actual guidewires used in tip durability tests.

1:1 Torque

Terumo's unique DuoCore™ Technology seamlessly fuses two proven guidewire technologies to ensure excellent torqueability, steerability, pushability and trackability.



For more information, call 800.862.4143 to speak to an Inside Sales Customer Care Representative or visit www.terumo.com
Terumo Interventional Systems • 2101 Cottontail Lane • Somerset, NJ 08873 • Fax: 800.411.5870

© 2008 Terumo Medical Corporation. All rights reserved. Balance Middle Weight (BMW) is a registered trademark of Abbott Vascular.
Prowater is a registered trademark of Asahi Intec Co. All other brand names are trademarks or registered trademarks of Terumo.
TIS15 07/08



TERUMO INTERVENTIONAL SYSTEMS