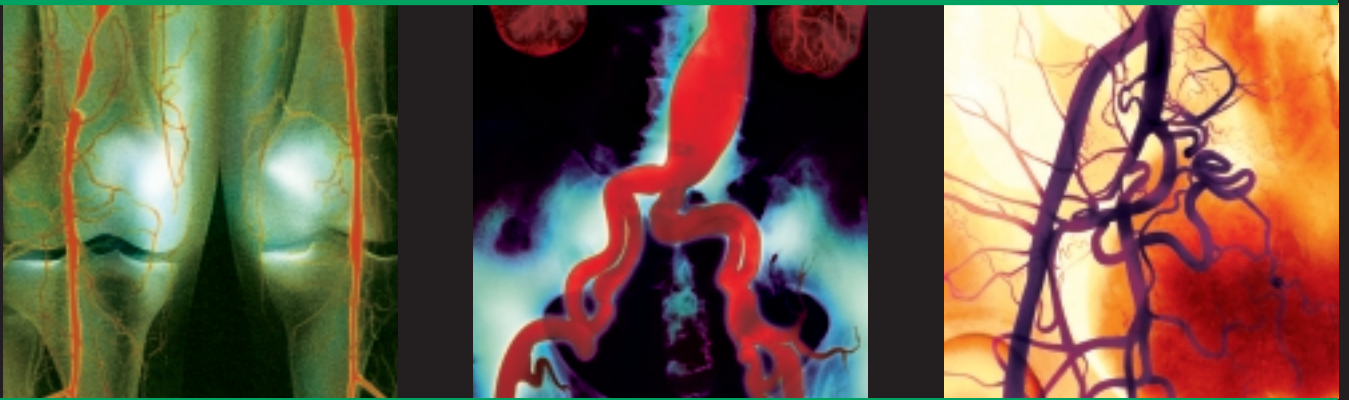


This is TERUMO Territory.™



Cross-Reference Guide

As of April 1, 2006, Terumo Interventional Systems begins direct sales and support of its full line of endovascular interventional products formerly sold through Boston Scientific Corporation.

Pinnacle®

Introducer Sheaths for Coronary Applications

Terumo Pinnacle Introducer Sheaths designed for coronary applications are packed 10 per box and include dilator.

BSC Product Code	BSC UPN (Box)	Terumo Product Code
16034-04	H74916034041	RSS402
16035-05	H74916035051	RSS502
16035-06	H74916035061	RSS602
16035-07	H74916035071	RSS702
16035-08	H74916035081	RSS802
16035-09	H74916035091	RSS902
16035-10	H74916035101	RSS002
16035-11	H74916035111	RSS102
16036-04	H74916036041	RSS404
16036-05	H74916036051	RSS504
16036-06	H74916036061	RSS604
16036-07	H74916036071	RSS704
16036-08	H74916036081	RSS804
16036-09	H74916036091	RSS904
16036-10	H74916036101	RSS004
16036-11	H74916036111	RSS104
16037-05	H74916037051	RSS506
16037-06	H74916037061	RSS606
16037-07	H74916037071	RSS706
16037-08	H74916037081	RSS806
16037-09	H74916037091	RSS906
16037-10	H74916037101	RSS006
16037-11	H74916037111	RSS106

Pinnacle®

Introducer Sheaths for Peripheral Applications

Terumo Pinnacle Introducer Sheaths for peripheral applications are packed 10 per box and include dilator.

BSC Product Code	BSC UPN (Box)	Terumo Product Code
15-710	M001157101	RSS401
15-711	M001157111	RSS501
15-712	M001157121	RSS601
15-713	M001157131	RSS701
15-714	M001157141	RSS801
15-715	M001157151	RSS901
15-716	M001157161	RSS001
15-717	M001157171	RSS101
15-720	M001157201	RSS403
15-721	M001157211	RSS503
15-722	M001157221	RSS603
15-723	M001157231	RSS703
15-724	M001157241	RSS803
15-725	M001157251	RSS903
15-726	M001157261	RSS003
15-727	M001157271	RSS103
15-730	M001157301	RSS505
15-731	M001157311	RSS605
15-732	M001157321	RSS705
15-733	M001157331	RSS805
15-734	M001157341	RSS905
15-735	M001157351	RSS005
15-736	M001157361	RSS105

Pinnacle® R/O II

Radiopaque Marker Introducer Sheaths

Terumo Pinnacle Introducer Sheaths are packed 10 per box and include dilator.

BSC Product Code	BSC UPN (Box)	Terumo Product Code
15-957	M001159571	RSB601
15-958	M001159581	RSB701
15-959	M001159591	RSB801
15-962	M001159621	RSB602
15-963	M001159631	RSB702
15-964	M001159641	RSB802
15-965	M001159651	RSB603
15-966	M001159661	RSB703
15-967	M001159671	RSB803

Pinnacle® Destination®

Guiding Sheaths

Terumo Pinnacle Destination Guiding Sheaths are packed 1 per box and include dilator. All dilators are 0.038" wire compatible.

BSC Product Code	BSC UPN (Box)	Terumo Product Code
15-340	M001153400	RSR13
15-341	M001153410	RSR14
15-342	M001153420	RSR15
15-343	M001153430	RSR16
15-349	M001153490	RSR17
15-350	M001153500	RSR18
15-351	M001153510	RSR19
15-352	M001153520	RSR20
15-570	M001155700	RSR01
15-571	M001155710	RSR02
15-572	M001155720	RSR03
15-573	M001155730	RSR04
15-574	M001155740	RSR05
15-575	M001155750	RSR06
15-576	M001155760	RSR07
15-577	M001155770	RSR08
15-578	M001155780	RSR09
15-579	M001155790	RSR10
15-580	M001155800	RSR11
15-581	M001155810	RSR12
15-582	M001155820	RSC01
15-583	M001155830	RSC02

Glidewire®

Hydrophilic Coated Guidewires

Terumo Glidewire Guidewires are packed 5 per box.

BSC Product Code	BSC UPN (Box)	Terumo Product Code
Shapeable Tip Glidewire		
46-360	M001463601	GE3501
46-362	M001463621	GE3502
46-364	M001463641	GE3801
Standard Glidewire		
46-127	M001461271	GR3202
46-128	M001461281	GR3201
46-150	M001461501	GR3505
46-151	M001461511	GR3506
46-152	M001461521	GR3508
46-154	M001461541	GR3509
46-155	M001461551	GR3501
46-156	M001461561	GR3503
46-159	M001461591	GR3504
46-160	M001461601	GR3805
46-161	M001461611	GR3806
46-162	M001461621	GR3808
46-164	M001461641	GR3809
46-165	M001461651	GR3801
46-166	M001461661	GR3803
46-169	M001461691	GR3804
Long Taper Glidewire		
46-325	M001463251	GR3507
46-328	M001463281	GR3502
46-331	M001463311	GR3807
46-334	M001463341	GR3802
Stiff Shaft Glidewire		
46-300	M001463001	GS3505
46-301	M001463011	GS3804
46-305	M001463051	GS3506
46-306	M001463061	GS3501
46-308	M001463081	GS3508
46-309	M001463091	GS3503
46-311	M001463111	GS3805
46-312	M001463121	GS3801
46-314	M001463141	GS3807
46-315	M001463151	GS3803
46-316	M001463161	GS3509
46-317	M001463171	GS3504
Stiff Shaft Long Taper Glidewire		
46-318	M001463181	GS3507
46-319	M001463191	GS3510
46-320	M001463201	GS3502
46-321	M001463211	GS3806
46-322	M001463221	GS3802
Small Vessel Glidewire		
46-125	M001461251	GR2504
46-126	M001461261	GR2501
46-231	M001462311	GR1805
46-232	M001462321	GR1806
46-235	M001462351	GR1802
46-236	M001462361	GR1803
46-240	M001462401	GR2505
46-249	M001462491	GR2502
46-254	M001462541	GR2506
46-255	M001462551	GR2503
46-358	M001463581	GE1801
J-Tip Glidewire		
46-350	M001463501	GR3510
46-355	M001463551	GR3810

Glidewire® Gold

Hydrophilic Coated Guidewires

Terumo Glidewire Gold Guidewires are packed 1 per box and include torque device.

BSC Product Code	BSC UPN (Box)	Terumo Product Code
Small Vessel Glidewire Gold		
46-241	M001462410	GM1811
46-242	M001462420	GM1813
46-243	M001462430	GM1812
46-244	M001462440	GM1814
Glidewire Gold Guidewires for Neuro Applications		
46-229	M001462290	GM1601
46-230	M001462300	GM1602
46-233	M001462330	GM1801
46-234	M001462340	GM1802
46-256	M001462560	GM1001
46-257	M001462570	GM1002
46-266	M001462660	GM1401
46-267	M001462670	GM1402

Headliner®

Hydrophilic Coated Guidewires for Neuro Applications

Terumo Headliner Guidewires are packed 1 per box and include torque device.

BSC Product Code	BSC UPN (Box)	Terumo Product Code
46-365	M003463650	GM1621
46-366	M003463660	GM1622
46-367	M003463670	GM1624
46-368	M003463680	GM1623
46-369	M003463690	GM1221
46-370	M003463700	GM1222
46-371	M003463710	GM1224
46-372	M003463720	GM1223

Glidecath®

Hydrophilic Coated Catheters

Terumo Glidecath Hydrophilic Coated Catheters are 0.038" guidewire compatible and packed 5 per box.

BSC Product Code	BSC UPN (Box)	Terumo Product Code
32-170	M001321701	CG412
32-171	M001321711	CG413
32-172	M001321721	CG415
32-173	M001321731	CG416
32-174	M001321741	CG408
32-175	M001321751	CG409
32-176	M001321761	CG410
32-177	M001321771	CG418
32-178	M001321781	CG401
32-179	M001321791	CG402
32-180	M001321801	CG403
32-181	M001321811	CG404
32-182	M001321821	CG405
32-183	M001321831	CG406
32-184	M001321841	CG407
32-185	M001321851	CG411
32-186	M001321861	CG414
32-187	M001321871	CG417
32-190	M001321901	CG505
32-133	M001321331	CG506
32-136	M001321361	CG507
32-139	M001321391	CG508
32-142	M001321421	CG501
32-145	M001321451	CG502
32-146	M001321461	CG503
32-148	M001321481	CG504
32-151	M001321511	CG510
32-154	M001321541	CG511
32-155	M001321551	CG512
32-157	M001321571	CG513
32-160	M001321601	CG514
32-161	M001321611	CG515
32-162	M001321621	CG516
32-163	M001321631	CG509

Accessories

Obturator

Obturator are packed 10 per box.

BSC Product Code	BSC UPN (Box)	Terumo Product Code
16038-05	H74916038051	XX501
16038-06	H74916038061	XX601
16038-07	H74916038071	XX701
16038-08	H74916038081	XX801
16038-09	H74916038091	XX901
16039-05	H74916039051	XX502
16039-06	H74916039061	XX602
16039-07	H74916039071	XX702
16039-08	H74916039081	XX802
16039-09	H74916039091	XX902

Torque Device

Torque Device is packed 5 per box.

BSC Product Code	BSC UPN (Box)	Terumo Product Code
46-653	M001466531	TD01

For more information, call 800.888.3786 to speak to an Account Service Representative, or visit www.terumomedical.com/interventional

Terumo Medical Corporation
2101 Cottontail Lane
Somerset, NJ 08873

© 2006 Terumo Medical Corporation. All rights reserved. All brand names are trademarks or registered trademarks of Terumo Corporation. Destination and This is TERUMO Territory are trademarks or registered trademarks of Terumo Medical Corporation.