

Heartrail[®]

Guiding Catheter

TRANSFORM

YOUR RADIAL TECHNIQUE



 **TERUMO**
INTERVENTIONAL
SYSTEMS

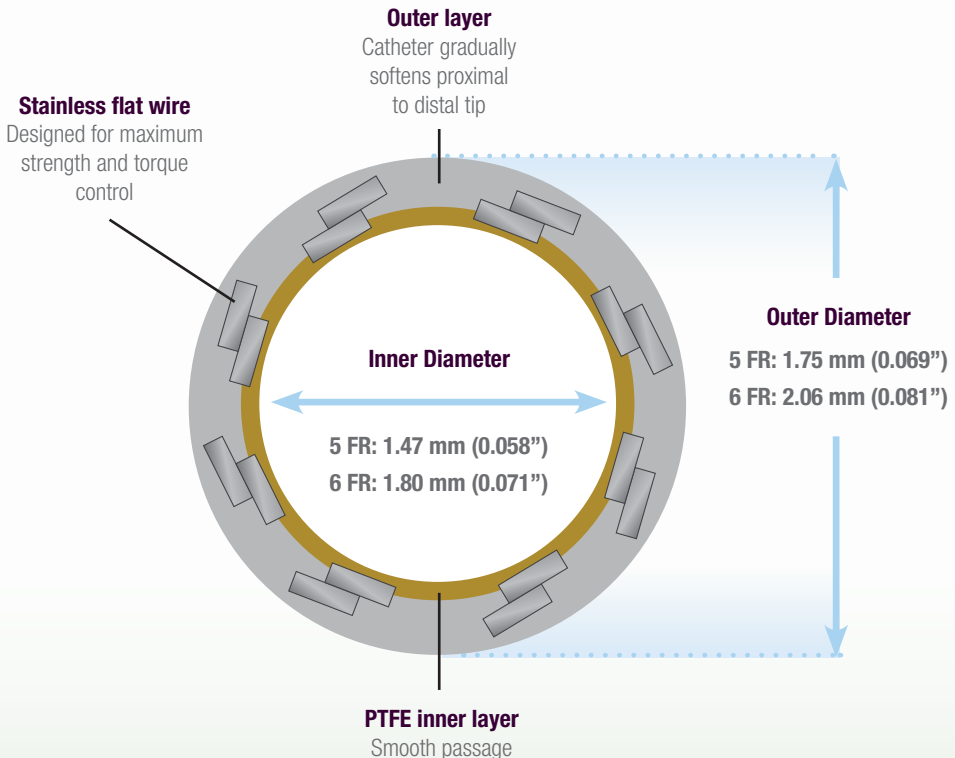
Heartrail[®]

Guiding Catheter

Stainless steel flat wire braid provides optimal flexibility, strength and torque control

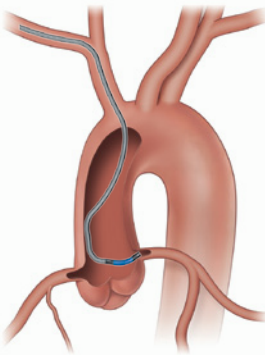
- High radiopacity enhanced by distal braiding to allow for visibility under fluoroscopy
- Coaxial Alignment
 - Tip of catheter is designed to fit coaxial to the ostium
 - Designed to allow catheter to sit at appropriate angle for optimal engagement
 - Soft tip reduces potential for vessel Trauma

Shaft Cross Section

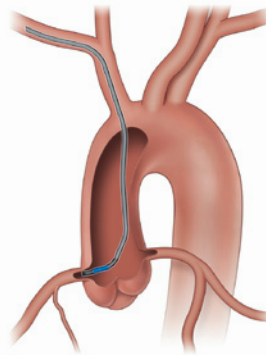


A radial specific catheter that provides enhanced back up support in comparison to standard femoral guide catheter shapes – resulting in simplified procedures¹

- Ikari Left is a universal catheter capable of accessing both the RCA and LCA, this can potentially:
 - Limit catheter exchanges
 - Shorten procedure and fluoroscopy
- Ikari L (IL) has 2.5 times stronger backup force than Judkins L (JL) in TRI.
 - Heartrail Guiding Catheters provide Enhanced Back-Up Support²
 - Stability for advancing device without the catheter backing out of the ostium
- The Ikari Left's enhanced back up and universal nature makes for an optimal solution during STEMI procedures



Ikari Left



Ikari Right

PUSHING BOUNDARIES



Terumo Interventional Systems **is committed to your success** with innovative procedural solutions and ongoing support for your most challenging cases.

We're relentlessly seeking new ways to help you apply effective solutions and achieve **better outcomes for more patients.**



Heartrail®

Guiding Catheter

Packed 1 per box

Shape Category	Shape Name	Product Code	Size (Fr)	Length (cm)	Side Holes	Tip Shape
Ikari Left	IL3.5	40-5370	5 Fr	100	0	
		40-6370	6 Fr	100	0	
		40-6371	6 Fr	100	2	
	IL3.75	40-5372	5 Fr	100	0	
		40-6372	6 Fr	100	0	
		40-6377	6 Fr	100	2	
	IL4.0	40-5373	5 Fr	100	0	
		40-6373	6 Fr	100	0	
		40-6374	6 Fr	100	2	
	IL4.5	40-5375	5 Fr	100	0	
		40-6375	6 Fr	100	0	
		40-6376	6 Fr	100	2	
Ikari Right	IR1.0	40-5380	5 Fr	100	0	
		40-6380	6 Fr	100	0	
		40-6383	6 Fr	100	2	
	IR1.5	40-5381	5 Fr	100	0	
		40-6381	6 Fr	100	0	
		40-6384	6 Fr	100	2	
	IR2.0	40-5382	5 Fr	100	0	
		40-6382	6 Fr	100	0	
		40-6385	6 Fr	100	2	
TIG Mod	TIG4.0	40-5311	5 Fr	100	0	
		40-6311	6 Fr	100	0	

Maximum pressure: 700 psi.

FIND OUT MORE | Phone: 800.862.4143 terumo.com Fax: 800.411.5870

References:

1. Yuji Ikari, MD, PhD, FACC, FESC, Professor, Department of Cardiology, Tokai University, Japan. Commentary by Mauricio G. Cohen, MD, FACC. "Long-Term Experience Using the Ikari Guide Catheter for Radial PCI" Cath Lab Digest Volume 21 - Issue 9 - September 2.
2. Ikari Y, Nagaoka M, Kim JY, Morino Y, Tanabe T. The physics of guiding catheters for the left coronary artery in transfemoral and transradial interventions. J Invasive Cardiol. 2005 Dec; 17(12): 636-641.

