

***Glidecath***<sup>®</sup>

Hydrophilic Coated Catheter

**VISUALIZE  
AND DELIVER**



 **TERUMO**  
INTERVENTIONAL  
SYSTEMS

# Glidecath<sup>®</sup>

Hydrophilic Coated Catheter

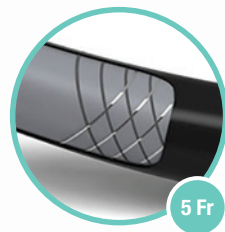
## YOUR PROCEDURAL SOLUTION FOR NAVIGATION AND SELECTIVITY

### Determine the best approach to challenging lesions

- Navigate difficult vessel anatomy with smooth tracking facilitated by TERUMO Glide Technology™
- Leverage superior kink resistance to achieve ideal flow rates for diagnostic imaging<sup>1,a</sup>

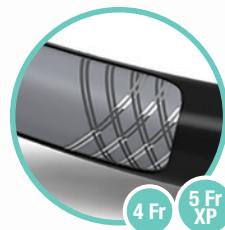
### Single-braided

- Reach distal visceral vessels with best-in-class trackability<sup>1,a</sup>
- Approach tortuous anatomy with best-in-class pushability<sup>1,a</sup>



### Double-braided

- Access and cross challenging lesions with excellent pushability and torquability<sup>1</sup>
- Achieve superior device delivery through a nylon-rich inner layer<sup>1,a</sup>
- Leverage superior kink resistance to maintain lumen integrity throughout the procedure<sup>1,a</sup>



## PUSHING BOUNDARIES

Terumo Interventional Systems is **committed to your success** with innovative procedural solutions and ongoing support for your most challenging cases.

We are relentlessly seeking new ways to help you apply effective solutions and achieve **better outcomes for more patients.**

<sup>a</sup>When compared to Merit Impress and AngioDynamics Mariner during mechanical bench testing

# Glidecath®

Hydrophilic Coated Catheter

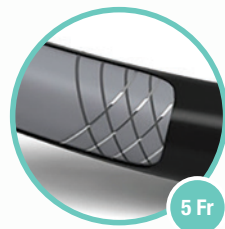
## YOUR PROCEDURAL SOLUTION FOR NAVIGATION AND SELECTIVITY

### Determine the best approach to challenging lesions

- Navigate difficult vessel anatomy with smooth tracking facilitated by TERUMO Glide Technology™
- Leverage superior kink resistance to achieve ideal flow rates for diagnostic imaging<sup>1,a</sup>

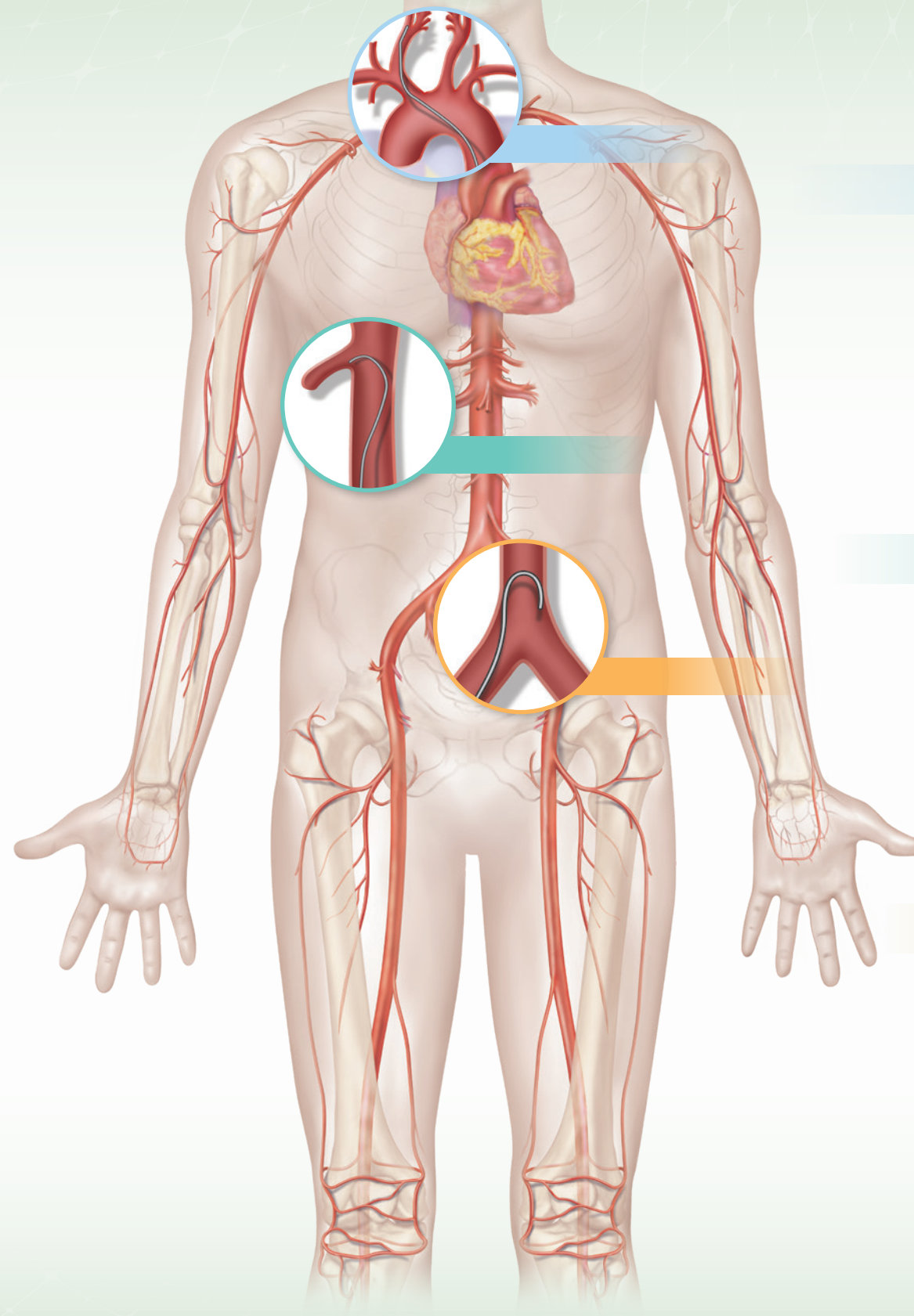
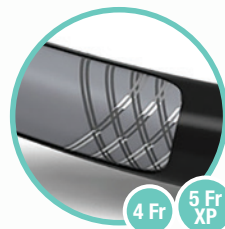
#### Single-braided

- Reach distal visceral vessels with best-in-class trackability<sup>1,a</sup>
- Approach tortuous anatomy with best-in-class pushability<sup>1,a</sup>

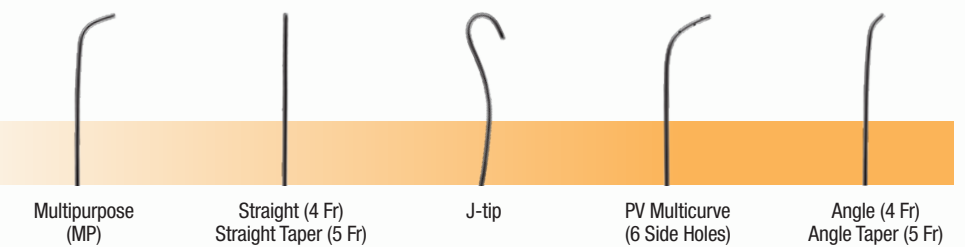
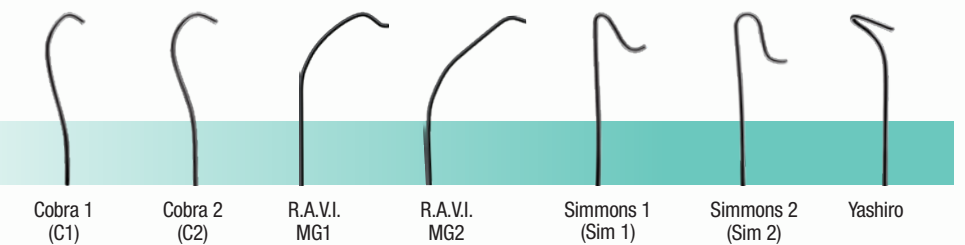
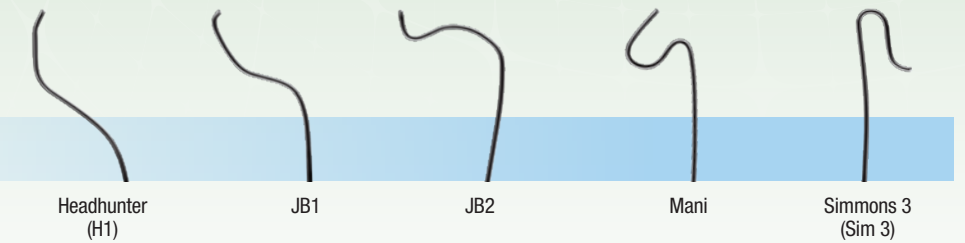


#### Double-braided

- Access and cross challenging lesions with excellent pushability and torquability<sup>1</sup>
- Achieve superior device delivery through a nylon-rich inner layer<sup>1,a</sup>
- Leverage superior kink resistance to maintain lumen integrity throughout the procedure<sup>1,a</sup>



## OPTIMAL VESSEL SELECTIVITY



TERUMO offers an impressive array of tip shapes designed for various anatomical scenarios.

<sup>a</sup>When compared to Merit Impress and AngioDynamics Mariner during mechanical bench testing

# YOUR FIRST CHOICE FOR VESSEL SELECTIVITY AND ACCESS

## GLIDECATH® Hydrophilic Coated Catheter

All catheters packed 5 per box  
(\*Yashiro packed 3 per box)

	CATHETER LENGTH							
	4 Fr	65 cm	70 cm	100 cm	120 cm	125 cm	135 cm	150 cm
TIP SHAPES	Straight	CG412	-	CG413	CG414	-	-	CG431
	Angle	CG415	-	CG416	CG417	-	-	CG432
	C1	CG408	-	-	-	-	-	-
	C2	CG409	-	CG410	-	-	-	CG434
	J-Tip	CG411	-	-	-	-	-	-
	Yashiro*	-	CG422	-	-	-	-	-
	Sim 1	-	-	CG401	-	-	-	-
	Sim 2	-	-	CG402	-	-	-	-
	Sim 3	-	-	CG403	-	-	-	-
	H1	-	-	CG404	-	-	-	-
	JB1	-	-	CG405	-	-	-	-
	JB2	-	-	CG406	-	-	-	-
	RAVI MG1	-	-	-	-	CG440	-	-
	RAVI MG2	-	-	-	-	-	CG441	CG442
	MP	-	-	CG418	-	-	-	-
	Mani	-	-	CG407	-	-	-	-
	Pigtail	-	-	-	-	-	-	CG433
	PV Multicurve	-	-	-	-	-	-	CG430

	5 Fr	65 cm	70 cm	100 cm	120 cm	125cm	135 cm	150 cm
	TIP SHAPES	Straight	CG505	-	CG506	-	-	-
Angle Taper		CG507	-	CG508	-	-	-	-
C1		CG501	-	-	-	-	-	-
C2		CG502	-	CG503	-	-	-	-
J-Tip		CG504	-	-	-	-	-	-
Yashiro*		-	CG519	-	-	-	-	-
Sim 1		-	-	CG510	-	-	-	-
Sim 2		CG521	-	CG511	-	-	-	-
Sim 3		-	-	CG512	-	-	-	-
H1		-	-	CG513	-	-	-	-
JB1		-	-	CG514	-	-	-	-
JB2		-	-	CG515	-	-	-	-
MP		-	-	CG509	-	-	-	-
Mani		-	-	CG516	-	-	-	-

	5 Fr XP	65 cm	70 cm	100 cm	120 cm	125 cm	135 cm	150 cm
	TIP SHAPES	Straight	RF*ZM7510GM	-	RF*ZM75110M	-	-	-
Angle		RF*ZV9510GM	-	RF*ZV95110M	-	-	-	-
C2		RF*ZB5510GM	-	-	-	-	-	-
Sim 1		-	-	RF*WA15110M	-	-	-	-
Sim 2		-	-	RF*WA25110M	-	-	-	-
H1		-	-	RF*WB15110M	-	-	-	-
RAVI MG1		-	-	-	-	RF*ZRV511CM	-	-
RAVI MG2		-	-	-	-	-	RF*ZUF511DJM	RF*ZUF5115JM

**FIND OUT MORE**



US: 800.888.3786  
CA: 833.883.7866



US: [terumo.com](http://terumo.com)  
CA: [terumocanada.ca](http://terumocanada.ca)

**Reference:**

1. Data on file.

**RX ONLY. The advertisement is directed to physicians only, and not to consumers. Refer to product labels and packaging insert for complete warnings, precautions, potential complications, and instructions for use. Products may not have regulatory approval in all countries. Please contact your local sales representative if you have questions about the availability of products in your area.**

©2024 Terumo Medical Corporation and Terumo Medical Canada Inc. All rights reserved. The third-party trademarks used herein are trademarks of their respective owners. All other brand names are trademarks or registered trademarks of Terumo. PM-07766

